

DUE114UK (DC)
DUE114UE (AC)



Reduce
water

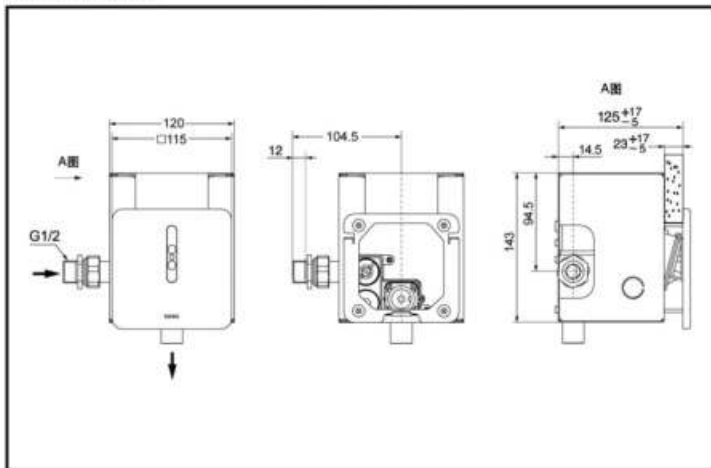


Auto
Functions

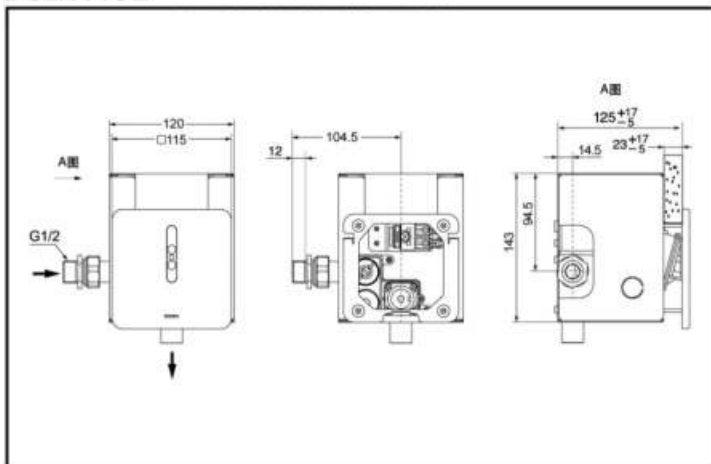
FEATURES

- In-wall resin panels.
- Touchless sensing operation.
- AC and DC two types available.

DUE114UK In-wall Sensor Urinal Flush Valve



DUE114UE In-wall Sensor Urinal Flush Valve



SPECIFICATIONS

Size : 115*115mm

Water Supply:

0.05MPa (dynamic pressure) ~ 0.75MPa (static pressure)

Environment Temperature:

1~55°C

Water Use : ≤1.9L

Power: DUE114UK (DC)

DUE114UE (AC)

Sensing Distance:

Within 800mm in front of the sensor

*TOTO (CHINA) CO.,LTD. All rights reserved.